



AERTM

ARABIANEQUIPMENT.COM



**YOUR PROVEN DEWATERING PARTNER
ACROSS THE MIDDLE EAST & BEYOND.**

UAE • QATAR • SAUDI ARABIA



AERTM

ARABIANEQUIPMENT.COM

DEWATERING & GROUNDWATER CONTROL EXPERTS.

UAE • QATAR • SAUDI ARABIA



PART OF THE COCO GROUP



YOUR PROVEN DEWATERING PARTNER ACROSS THE MIDDLE EAST & BEYOND.

FOR PUMP RENTALS AND DEWATERING SERVICES, WE HAVE THE INDUSTRY EXPERTISE YOU CAN RELY ON.

A **RABIAN EQUIPMENT** provides a cost effective, reliable consultancy service. You can rely on our extensive experience in the dewatering & ground control industry to ensure we can manage your project in a professional, trusted and cost effective manner.

Our focus is purely on industry related engineering and project work. Accordingly we provide our customers with focus and expertise in our specialised fields.

AER is a multi-disciplined engineering based consultancy business established to provide customers with a complete range of services across our product groups:

- **Dewatering and Ground Control Services**
- **Generator Sets**
- **Traffic and Information Management Systems**
- **Fuel Tanks and Storage Systems**



ABOUT US



DISCOVER THE AER ADVANTAGE.

ARABIAN EQUIPMENT is a division of the **COCO Group** (Australia), which has been established in the Middle East since 2001, with a trusted history of operations in the region extending further back.

A **ARABIAN EQUIPMENT** offers a wide range of effective and innovative pumping solutions through design & build, installation and full project management of dewatering systems.

All equipment used by AER is designed to meet the harsh conditions of the Middle East. Our pumps feature stainless steel internal parts for corrosion resistance and control valves to optimize system efficiency. AER maintains one of the largest pump and dewatering fleets in the Middle East, meticulously maintaining all equipment on-site for maximum reliability and performance, ensuring immediate availability for use.

TRIED AND TRUSTED FOR THE MOST DEMANDING OF JOBS.

OUR POWERFUL, PURPOSEFUL LINE-UP OF PUMPS ARE ENGINEERED AND DESIGNED TO LET YOU MASTER ANY DEWATERING TASK PROJECT.

Pumps supplied by Arabian Equipment are manufactured by the Sykes Group (Australia). Explore our extensive rental fleet, featuring powerful dewatering pump sets ranging from 12" down to 4", as well as high-flow 3" jetting pump units. Crafted in Australia and assembled to the highest standards in the UAE, our pumps have proven their resilience in the toughest Australian conditions, mirroring the challenges of the Middle East.

Precision engineered & constructed from premium materials, they are proudly built to withstand harsh elements, including acidic, salty water, and extreme temperatures.



**PRECISION
ENGINEERED &
CONSTRUCTED
FROM PREMIUM
MATERIALS.**



THE AER AIM.

Our goal is to become the most professional and trusted dewatering company in the Gulf region, providing clients with the best equipment, service, and support.

We aim to be the preferred provider across the GCC for all dewatering applications requiring excellent performance, high flow rates, fuel efficiency, and proven reliability.

UNMATCHED AVAILABILITY THROUGHOUT THE MIDDLE EAST.

Arabian Equipment is a Middle East-based joint venture with established operations in Abu Dhabi, Dubai, Qatar, Bahrain, and Saudi Arabia.

To address the challenges of the local environment, Arabian Equipment has developed the most robust pumping and dewatering solutions available in the GCC today.



THE LINE-UP

- Dewatering Services & Installations
- Contractor Pumps
- Sound Attenuation Canopies - Silent Solution
- Electric Driven Pumps
- High Head, High Pressure Pumps
- Electric Submersibles
- Hoses & Accessories
- National & International Projects



Elevate your operations with Arabian Equipment.

Our high-performance Deutz and Perkins engines ensure unmatched reliability and performance on **every** job site.

EXTENSIVE DEWATERING PROJECT MANAGEMENT.



A HIRE POWER

STRATEGY

AER's strategy is to provide unparalleled, cost-effective dewatering and rental solutions in the Middle East.

With **premium engineered products and technical expertise**, we ensure the long-term success for your projects.



HOW IT'S DONE

WATER CONTROL MADE SIMPLE.

Our solid experience and expertise have enabled us to develop versatile dewatering solutions tailored to the diverse needs of the region.

With a fleet of highly specialised equipment, we offer flexible solutions for various requirements including:

- **Dewatering System Design**
- **Wellpoint Dewatering System**
- **Deep Well Dewatering System**
- **French Drain Dewatering System**



OUR DEWATERING METHODS.

With a deep understanding of the industry, we provide innovative dewatering solutions customized for a wide range of applications.



WELLPOINTS

Wellpoints are small-diameter (about 50 mm) tubes with slots near the bottom that are inserted into the ground from which water is drawn by a vacuum generated by a dewatering pump. Wellpoints are typically installed at close

centres in a line along or around the edge of an excavation. As a vacuum is limited to 0 bar, the height to which water can be drawn is limited to about 6 metres (in practice).

Wellpoints can be installed in stages, with the first reducing the water level by up to five metres, and a second stage, installed at a lower level, lowering it further.



DEEP WELLS

Deep wells are large-diameter wells with submersible pumps used to lower the groundwater table for deeper excavations.

Unlike wellpoints, deep wells can extract water from depths up to 30 metres, making them ideal for large-scale projects. Typically spaced farther apart, deep wells efficiently reduce groundwater levels. They can be installed in stages to gradually lower the water table.



SUMPING

Sump dewatering involves digging a pit at the lowest point of an excavation, where water naturally collects, and using pumps to remove it.

The collected water is then discharged away from the site, keeping the excavation dry. This method is ideal for shallow excavations and is simple and cost-effective. For larger sites, multiple sumps may be used to manage water more effectively.



OVERPUMPING, SEWAGE BYPASS, & FLUSHING

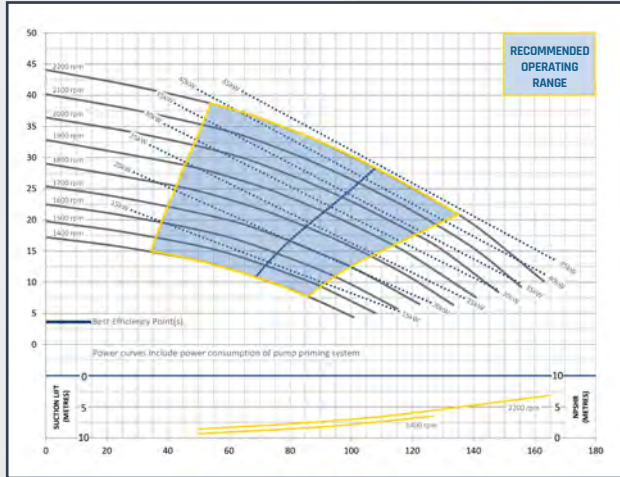
AER undertakes over-pumping, bypassing of stormwater and sewerage manholes, and flushing operations; providing comprehensive support for both equipment hire and full-scale project execution.

We offer an extensive inventory of centrifugal pumps, submersible pumps, and borehole deep well pumps, ensuring that all project needs are met efficiently and effectively.

POWER & PERFORMANCE.

AER proudly introduces its top-performing pumps, all precision engineered and designed for maximum efficiency and durability.

HEAD (metres) conversion factors: m x 3.28 = ft



FLOW (Litres per second) conversion factors:
L /sec x 15.85 = US gpm, L/sec x 3.6 = m³ per hour

PUMP: CP150iC

PUMPEND
CP150iC

IMPELLER DIA:
255 mm

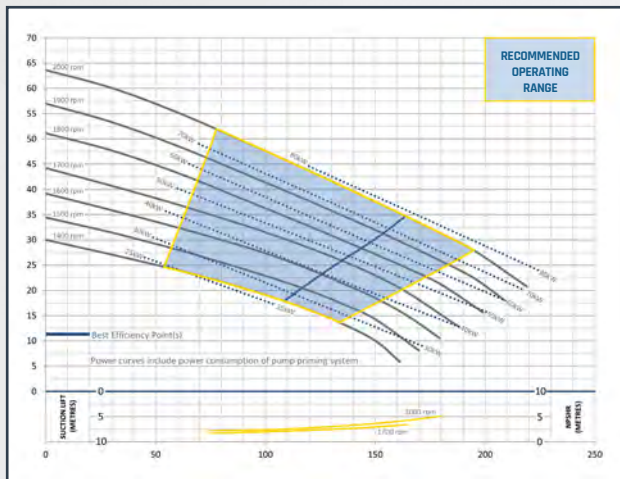
SOLID HANDLING SIZE
77 mm

SUCTION SIZE
150 mm

DISCHARGE SIZE
150 mm

¹Performance to AS2417 / ISO9906 grade 2 for clear, cold (15°C) water at sea level. Other Liquids may require performance adjustments.
²Performance curves do not include discharge check or non return valve losses.

HEAD (metres) conversion factors: m x 3.28 = ft



FLOW (Litres per second) conversion factors:
L /sec x 15.85 = US gpm, L/sec x 3.6 = m³ per hour

PUMP: CP220i

PUMPEND
CP220i

IMPELLER DIA:
320 mm

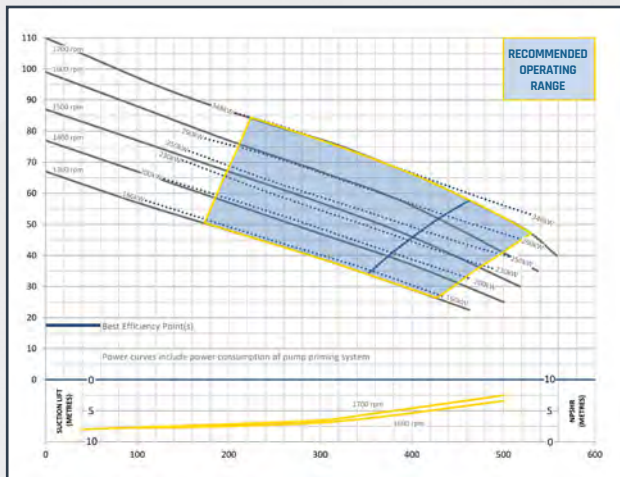
SOLID HANDLING SIZE
80 mm

SUCTION SIZE
200 mm

DISCHARGE SIZE
200 mm

¹Performance to AS2417 / ISO9906 grade 2 for clear, cold (15°C) water at sea level. Other Liquids may require performance adjustments.
²Performance curves do not include discharge check or non return valve losses.

HEAD (metres) conversion factors: m x 3.28 = ft



FLOW (Litres per second) conversion factors:
L /sec x 15.85 = US gpm, L/sec x 3.6 = m³ per hour

PUMP: MH300i

PUMPEND
MH300i

IMPELLER DIA:
510 mm

SOLID HANDLING SIZE
90 mm

SUCTION SIZE
300 mm

DISCHARGE SIZE
300 mm

¹Performance to AS2417 / ISO9906 grade 2 for clear, cold (15°C) water at sea level. Other Liquids may require performance adjustments.
²Performance curves do not include discharge check or non return valve losses.

UNLOCK EFFICIENCY WITH EQUIPMENT RENTAL FROM AER.

SHORT OR LONG TERM, renting preserves cash flow and offers flexibility for better business returns. Minimize expenses on depreciating assets and maximize investments in appreciating ones. Let AER handle the equipment and solutions, reducing risk and optimizing resource use.

Maintain financial agility by minimizing costs on assets that lose value and prioritizing investments in those that appreciate.

Trust AER to manage your equipment and solutions, ensuring smooth and efficient operations.

Our expertise ensures efficient operation, reducing downtime and optimizing productivity in all site areas.

THE AER ADVANTAGE

- ▶ Tailored system design for maximum efficiency
- ▶ Innovative engineering for reliable solutions
- ▶ Seamless compliance with all regulations
- ▶ Expert consultancy for project success
- ▶ Swift approvals process for timely execution
- ▶ Thorough site auditing for optimisation
- ▶ Smooth facilitation of project processes
- ▶ Ongoing full support for operational excellence
- ▶ Professional project experienced employees
- ▶ Expert installation and commissioning services



CERTIFICATIONS

CERTIFIED & PROVEN STANDARDS.

Our commitment to excellence is underscored by our ISO certifications, ensuring that our pump rental and dewatering services adhere to internationally recognized premium standards.



APPROVALS

TRIED & TRUSTED.





OUR PROJECTS

PEARL ISLANDS - QATAR



CONTRACTOR:

Rumallah

PROJECT BRIEF:

200 6" FMX150i Pumps

SCOPE OF WORK:

Dewatering and water sumping



THE WORKS

For the Pearl Island project in Qatar, our team successfully managed the site's dewatering and water sumping needs by utilising 200 powerful FMX150i pumps. This operation was essential to maintaining a dry and secure work environment, ensuring the project's progression without disruptions. Our involvement highlights our capability to deliver reliable water management solutions for large-scale developments.



OUR PROJECTS

FERRARI WORLD - ABU DHABI, UAE



THE WORKS

At Ferrari World Abu Dhabi, we played a crucial role in managing the complex construction of five 1.2km tunnels at a 20m depth, two sports yards, and Ferrari truck race buildings. Our team expertly handled various dewatering and groundwater control methods, ensuring the site remained dry and safe throughout the construction process. This project demonstrates our capability to manage challenging conditions while delivering results.

CONTRACTOR:

Besix

PROJECT BRIEF:

Excavation depth up to -22m
with 125,000.00m² area

SCOPE OF WORK:

Various kinds of dewatering
and groundwater control
methods



OUR PROJECTS

NEW DOHA AIRPORT - QATAR



CONTRACTOR:
CDC-Takenaka JV

PROJECT BRIEF:
Secant pile shoring for area
500m x 300m close to the sea.
Open excavation area 100m x
200m

SCOPE OF WORK:
Dewatering and water sumping



THE WORKS

At the New Doha Airport project in Qatar, we executed a critical operation for a 500m x 300m area near the sea. Our team efficiently managed the dewatering for the open excavation zone, spanning 100m x 200m. This ensured a stable and secure foundation, contributing to the successful completion of this high-profile infrastructure project. The technical and precise work carried out highlights our dedication to delivering top-notch solutions in challenging environments.



OUR PROJECTS

YAS RACETRACK - ABU DHABI, UAE



THE WORKS

At the Yas Island Race Track project, we were tasked with managing the dewatering and groundwater control for the construction of five 1.2km tunnels, each at a 20m depth, along with two sports yards and Ferrari truck race buildings. Our expertise ensured that the underground work proceeded smoothly, keeping the site dry and secure. This project showcased our ability to handle complex water management challenges in large-scale infrastructure developments.

CLIENT / CONTRACTOR:

Cebarco
Tilke Gmbh & Co

PROJECT BRIEF:

Five tunnels each 1.2km, 20m depth, two sports yards & Ferrari truck race buildings

SCOPE OF WORK:

Various kinds of dewatering and groundwater control methods



OUR PROJECTS

NEW GRAND HYATT - DOHA, QATAR



CONTRACTOR:

Al Majal Contracting

PROJECT BRIEF:

Dewatering system with trenches, french drain system including submersible pumps

SCOPE OF WORK:

Sump trenching



THE WORKS

We successfully completed the New Grand Hyatt Doha project by providing an exceptional dewatering system that met the highest standards. Our responsibilities included the construction of well-designed trenches and a reliable French Drain system, along with the installation of submersible pumps to ensure effective water management. Additionally, we carried out sump trenching with precision, ensuring the project's structural integrity and safety throughout the construction process.



**YOUR PROVEN DEWATERING
PARTNER ACROSS THE
MIDDLE EAST & BEYOND.**

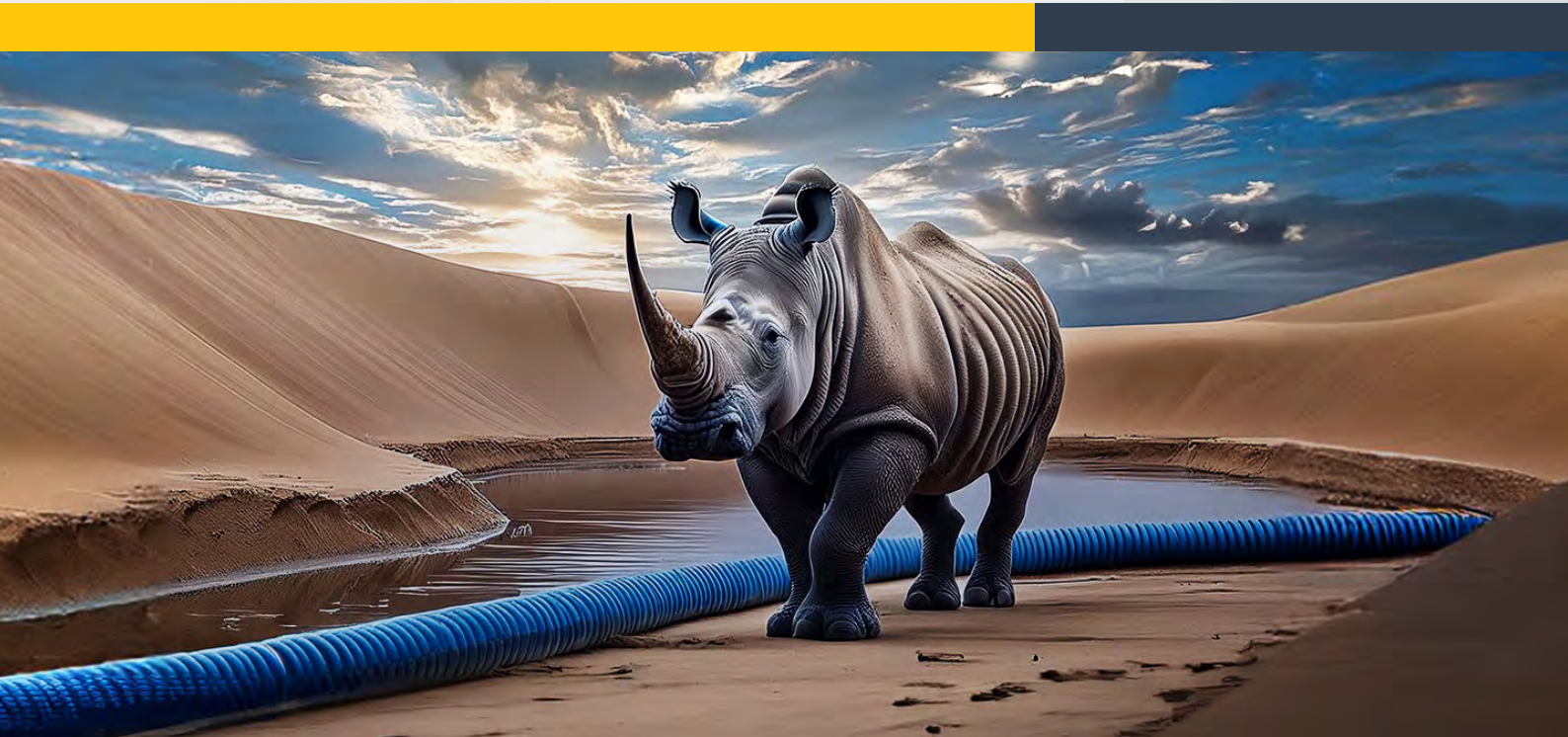
DISCOVER THE AER ADVANTAGE

**CALL OUR TEAM TODAY ON:
+971 4 258 4102**

ARABIANEQUIPMENT.COM



arabianequipment.com



Dubai Headquarters

AER DUBAI

Plot No. 597-586
PO Box: 49222
Dubai Investment Park 1
Dubai
United Arab Emirates

E: sales@arabianequipment.com
T: +971 (0) 4 258 4102

Abu Dhabi

AER ABU DHABI

Plot No. C1A
PO Box: 40422
Mohamad Bin Zayed City
Abu Dhabi
United Arab Emirates

E: management@arabianequipment.com
T: +971 (0) 2 555 5811

Qatar

AER QATAR

Po Box 2
Ma'arid Al Wab Building - J3
Salwa Road
Doha
Qatar

E: info@arabianequipment.com
T: +974 (0) 4 488 7530

SHARJAH MANUFACTURING & ENGINEERING YARD

Property No. 2034
PO Box: 74614, Sajaa
Sharjah
United Arab Emirates
E: hiredesk@arabianequipment.com
T: +971 (0) 6 546 1942

ABU DHABI YARD

M39, Plot 25, Store - 14
Musaffah
Abu Dhabi
United Arab Emirates
E: hiredesk@arabianequipment.com
T: +971 (0) 2 555 5811

QATAR YARD

AR Equipment WLL
Street 50 • Gate no.144
Zone no. 57 • Sanaya, Doha
Qatar
E: info@arabianequipment.com
T: +974 (0) 4 488 7530